



**Central Electronics Limited  
Materials Management Division**

27<sup>th</sup> November, 2017

**CORRIGENDUM-I**

Ref: Tender notice no. C-2(b)/RC/07/4470/2017 dated November 21, 2017

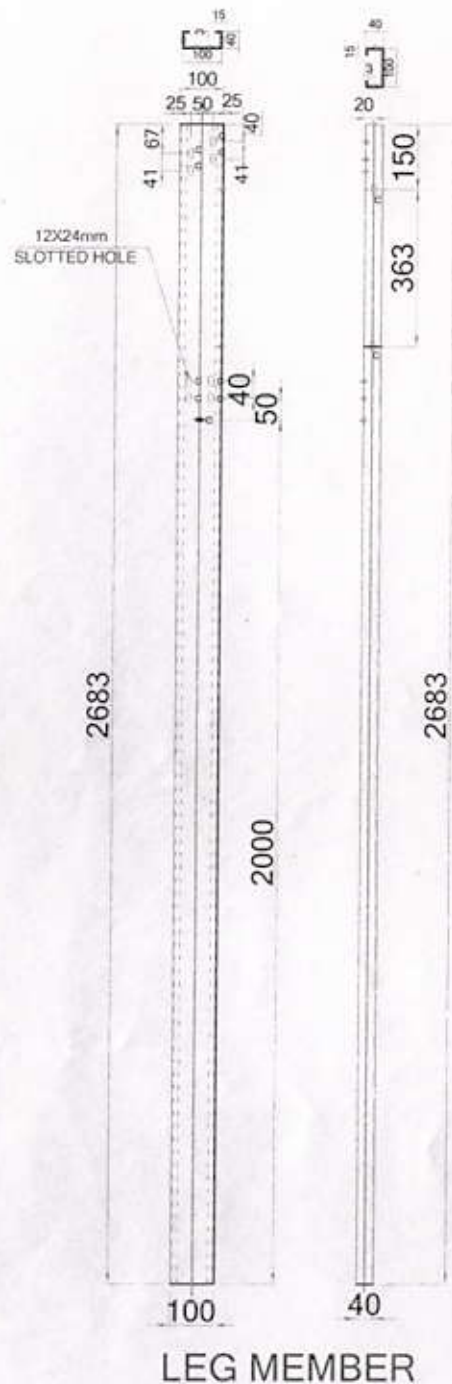
Sub: **SUPPLY OF BOS, INSTALLATION, COMMISSIONING AND 25 YEARS O&M OF 1000KWp GRID TIED SPV POWER PLANT**

In our tender notice/document no. C-2(b)/RC/07/4470/2017 dated November 21, 2017 the following is clarified:

1.	Please see the attached drawings which will be also be a part of the tender.
----	--

All other terms and condition will remain the same.

For CENTRAL ELECTRONICS LIMITED  
sd/-  
ASSISTANT GENERAL MANAGER  
MATERIALS MANAGEMENT DIVISION



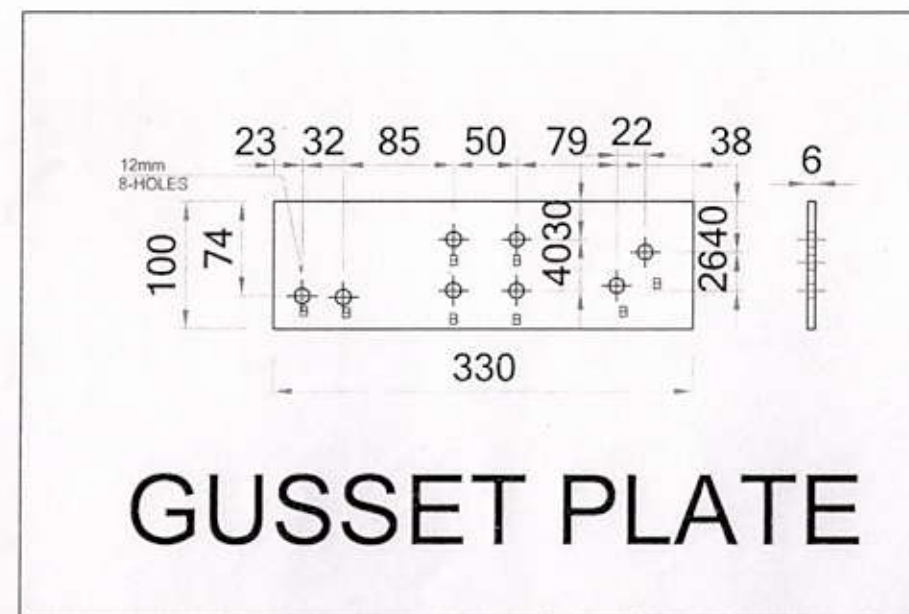
LEG MEMBER



REAR BRACING



FRONT BRACING

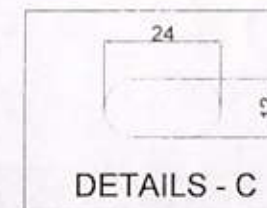


GUSSET PLATE

HOLE DETAIL:  
 B : 12mm THROUGH HOLE 9 NOS.  
 C : 12X24mm SLOT HOLE 20 NOS.  
 MATERIAL: 100X40X15X3MM  
 40X40X2MM  
 330X100X6MM  
 FINISH : HOT DIP GALVANIZED  
 80 MICRONS

MATERIAL DETAIL

PART NO	DESCRIPTION	SIZE	ST.QTY.NO	TOTAL ST.QTY.NO	TOTAL QTY.NO
1	LEG MEMBER	2683X100X40X15X3	5 NOS		
2	FRONT BRACING	1647X40X40X2	5 NOS		
3	REAR BRACING	1090X40X40X2	5 NOS		
4	GUSSET PLATE	330X100X6	5 NOS		



NOTES:-  
 1 : GENERAL TOLERANCE FOR CLASS 'M' IN ACCORDANCE WITH ISO 2768  
 2 : SPECIFICATION OF STRUCTURAL STEEL AS PER 2062  
 3 : DIMENSIONS OF STRUCTURAL STEEL AS PER IS 811  
 4 : ALL JOINTS UNIFORM AND GROUNDED/EDGED, DRILLES HOLES BURR FREE

*checked & verified by Adh PSL*  
**ABHILASH RAJWANSHI**  
 CHARTERED ENGINEER  
 MECHANICAL  
 MEMBERSHIP NO-AM150761-6  
*18/09/2017 & approved*

GENERAL TOLERANCE CHART (IN MM)

TOLERANCE CLASS (LENGTH OR DIA.)	0-6	6-30	30-120	120-315	315-1000	1000-2000	2000-4000
Fine	±0.05	±0.1	±0.15	±0.2	±0.3	±0.5	-
Medium	±0.1	±0.2	±0.3	±0.5	±0.8	±1.2	±2.5
Coarse	±0.2	±0.5	±0.8	±1.2	±2	±3	±4

DESIGNED	<i>Sonjan</i>	23/09/17	MATL .	DIM IN MM	NO.OFF
DRAWN	<i>Birah</i>	23/09/17	FINISH	SCALE	NTS
CHECKED	<i>Pratik</i>	23/09/17		PROJECT	CEERI(pilani)
APPROVED				RAJASTHAN	

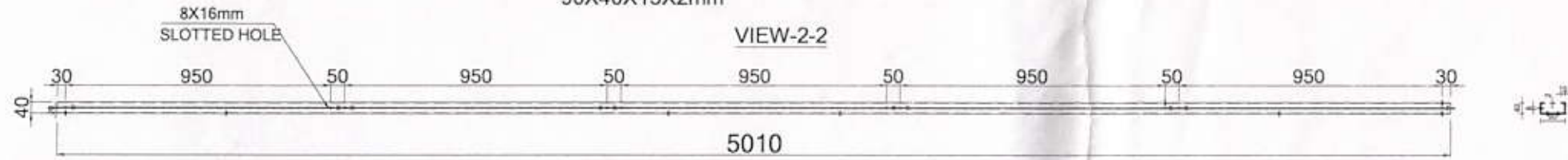
"THIS DOCUMENT IS THE PROPERTY OF CENTRAL ELECTRONICS LIMITED. REPRODUCTION, UTILISATION OR DISCLOSURE TO THIRD PARTIES IN ANY FORM WHATSOEVER IS NOT ALLOWED WITHOUT WRITTEN CONSENT OF THE PROPRIETORS".



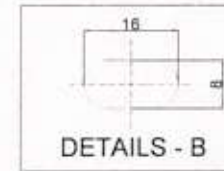
SOLAR PHOTOVOLTAIC GROUP  
 CENTRAL ELECTRONICS LIMITED  
 SAHIBABAD - 201010 (U.P.)

TITLE	
LEG MEMBER, BRACING & GUSSET PLATE FOR 20 MODULES STRUCTURE	
DRG.NO.	REV. NO. SHEET NO.
F0 10 00 002492	A3 00

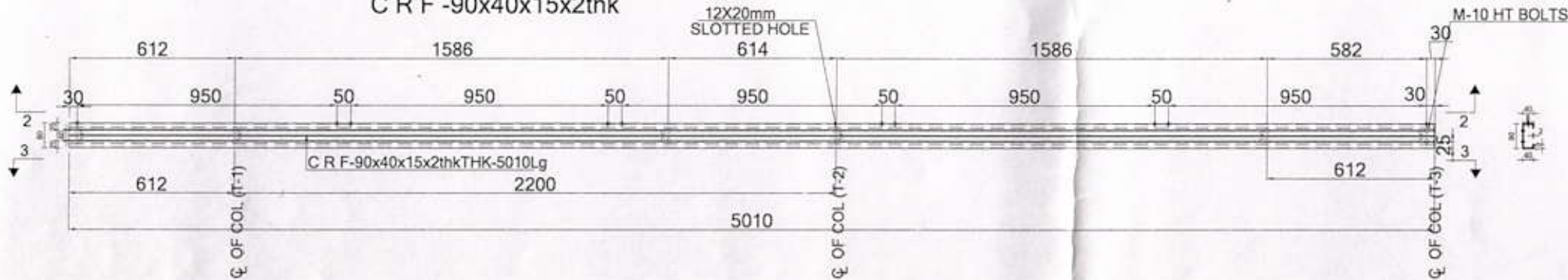
MODULE SUPPORT -A & B COLD FORMED  
90X40X15X2mm



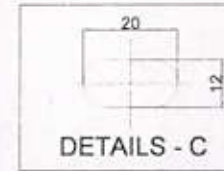
SIDE VIEW OF MODULE SUPPOT MEMBER -A&B



MODULE SUPPORT MEMBER-A&B  
C R F -90x40x15x2thk



FRONT VIEW OF MODULE SUPPOT MEMBER -A&B



VIEW-3-3

5010

SIDE VIEW OF MODULE SUPPOT MEMBER -A&B

MATERIAL DETAIL

PART NO	DESCRIPTION	SIZE	ST QTY NO	TOTAL ST QTY NO	TOTAL QTY NO
1	MODULE SUPPORT MEMBER-A&B	5010X40X15X2	8 NOS		

ALL DIMENSIONS ARE IN MM

HOLE DETAILS:

B : 8X16mm SLOT HOLE 10 NOS.  
C : 12X20mm SLOT HOLE 12 NOS.

MATERIAL: COLD ROLLED FORMED,  
90X40X15X2mm  
FINISH : HOT DIP GALVANIZED  
80 MICRONS

NOTES:-

- 1 : GENERAL TOLERANCE FOR CLASS 'M' IN ACCORDANCE WITH ISO 2768
- 2 : SPECIFICATION OF STRUCTURAL STEEL AS PER 2062
- 3 : DIMENSIONS OF STRUCTURAL STEEL AS PER IS 811
- 4 : ALL JOINTS UNIFORMLUAND GROUND/EDGED,DRILLES HOLES BURR FREE.

*checked & verified 18/09/2017*  
*approved*  
**ABHILASH RAJWANSHI**  
CHARTERED ENGINEER  
MECHANICAL  
MEMBERSHIP NO-AM150761-6

GENERAL TOLERANCE CHART (IN MM)

TOLERANCE CLASS (LENGTH OR DIA.)	0-6	6-30	30-120	120-315	315-1000	1000-2000	2000-4000
TOLERANCE DESCRIPTION	Fine	±0.05	±0.1	±0.15	±0.2	±0.3	±0.5
	Medium	±0.1	±0.2	±0.3	±0.5	±0.8	±1.2
	Coarse	±0.2	±0.5	±0.8	±1.2	±2	±3

DESIGNED	<i>Sanjeev</i>	23/09/17	MATL .	DIM IN MM.	NO.OFF
DRAWN	<i>Raj</i>	23/09/17	FINISH	SCALE	NTS
CHECKED	<i>Sanjeev</i>	23/09/17		PROJECT	CEERI(pilani)
APPROVED				RAJASTHAN	

"THIS DOCUMENT IS THE PROPERTY OF CENTRAL ELECTRONICS LIMITED.REPRODUCTION,UTILISATION OR DISCLOSURE TO THIRD PARTIES IN ANY FORM WHATSOEVER IS NOT ALLOWED WITHOUT WRITTEN CONSENT OF THE PROPRIETORS".



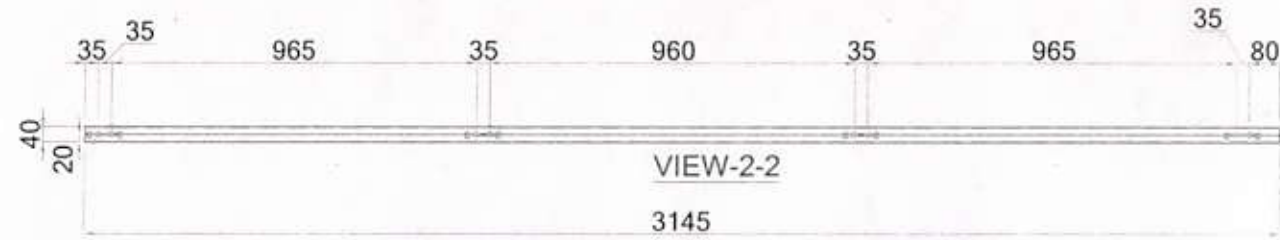
SOLAR PHOTOVOLTAIC GROUP  
CENTRAL ELECTRONICS LIMITED  
SAHIBABAD - 201010 (U.P.)

TITLE  
MODULES SUPPORT MEMBER -A&B FOR 20  
MODULES STRUCTURE

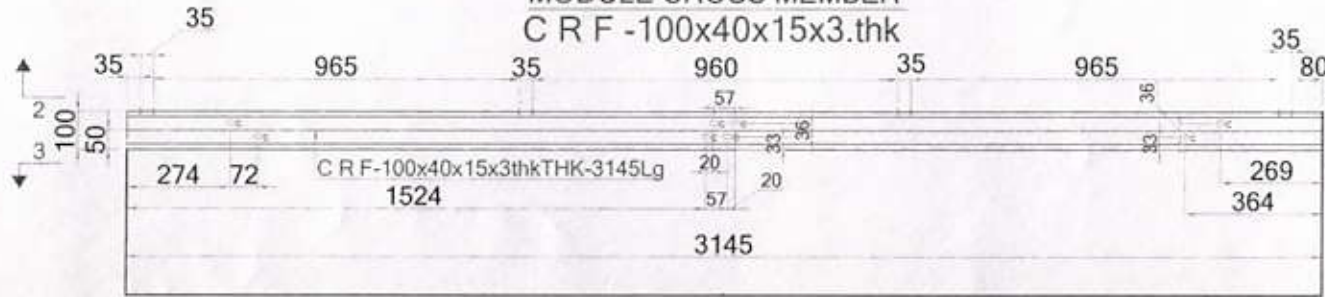
DRG.NO.  
FO 10 00 002494

A3  
Page 3 of 50

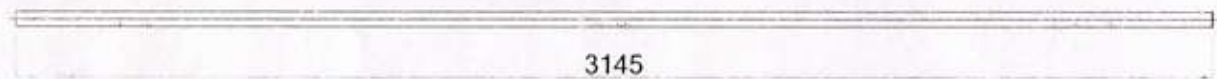
MODULE CROSS MEMBER



MODULE CROSS MEMBER  
C R F -100x40x15x3.thk



VIEW-3-3



MATERIAL DETAIL

PART NO	DESCRIPTION	SIZE	ST.QTY.NO	TOTAL ST.QTY.NO	TOTAL QTY.NO
1	MODULE CROSS MEMBER	3145X100x40X15X3	5 NOS		
2	L-BRACKET-A	160X124X4	4 NOS		
3	L-BRACKET-B	160X60X4	16 NOS		

NOTE:-

- 1 : GENERAL TOLERANCE FOR CLASS 'M' IN ACCORDANCE WITH ISO 2768
- 2 : SPECIFICATION OF STRUCTURAL STEEL AS PER 2002
- 3 : DIMENSIONS OF STRUCTURAL STEEL AS PER IS 811
- 4 : ALL JOINTS UNIFORMLY AND GROUNDED/EDGED, DRILLED HOLES BURR FREE.

*checked & verified*  
**ABHILASH RAJWANSHI** 18/09/2017  
 CHARTERED ENGINEER & approved  
 MECHANICAL  
 MEMBERSHIP NO-AM150761-6

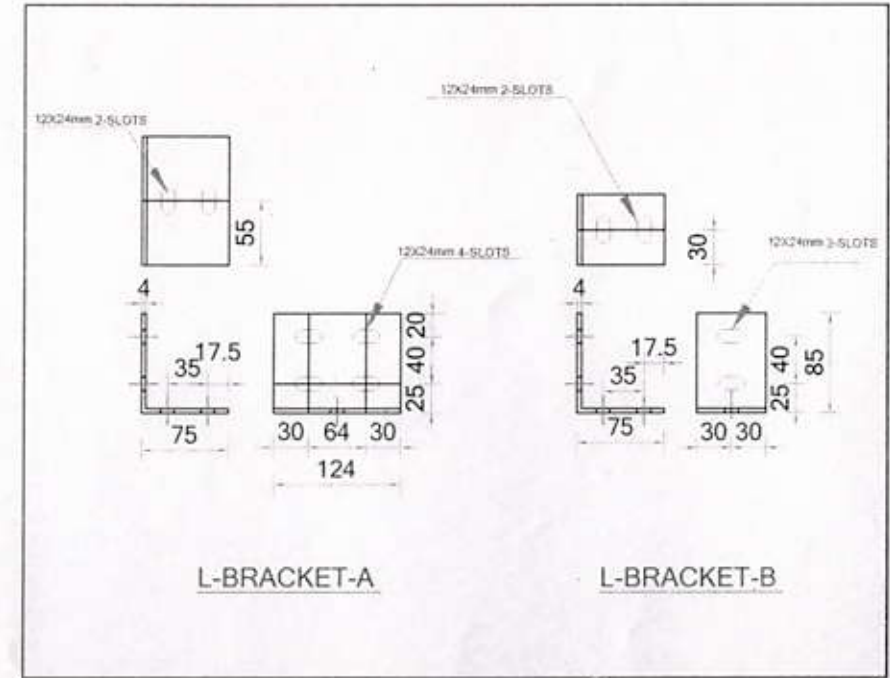
ALL DIMENSIONS ARE IN MM

"THIS DOCUMENT IS THE PROPERTY OF CENTRAL ELECTRONICS LIMITED. REPRODUCTION, UTILISATION OR DISCLOSURE TO THIRD PARTIES IN ANY FORM WHATSOEVER IS NOT ALLOWED WITHOUT WRITTEN CONSENT OF THE PROPRIETORS".

SIDE VIEW OF MODULE CROSS MEMBER

FRONT VIEW OF MODULE CROSS MEMBER

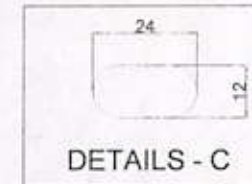
SIDE VIEW OF MODULE CROSS MEMBER



HOLE DETAILS:

C : 12X24mm SLOT HOLE 16 NOS.

MATERIAL: COLD ROLLED FORMED,  
 100X40X15X3mm  
 FINISH : HOT DIP GALVANIZED  
 80 MICRONS



GENERAL TOLERANCE CHART (IN MM)

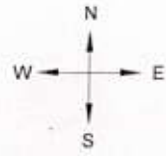
TOLERANCE CLASS (LENGTH OR DIA.)		0-6	6-30	30-120	120-315	315-1000	1000-2000	2000-4000
TOLERANCE DESCRIPTION	Fine	±0.05	±0.1	±0.15	±0.2	±0.3	±0.5	-
	Medium	±0.1	±0.2	±0.3	±0.5	±0.8	±1.2	±2.5
	Coarse	±0.2	±0.5	±0.8	±1.2	±2	±3	±4

DESIGNED	<i>Sanjeev</i>	23/09/17	MATL .	DIM IN MM.	NO.OFF
DRAWN	<i>Birgh</i>	23/09/17	FINISH	SCALE	NTS
CHECKED	<i>Sanjeev</i>	23/09/17		PROJECT	CEERI(pilani)
APPROVED				RAJASTHAN	

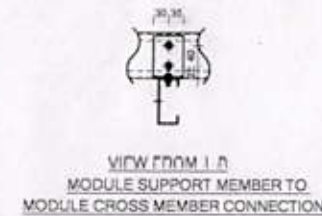
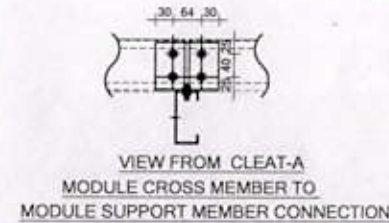
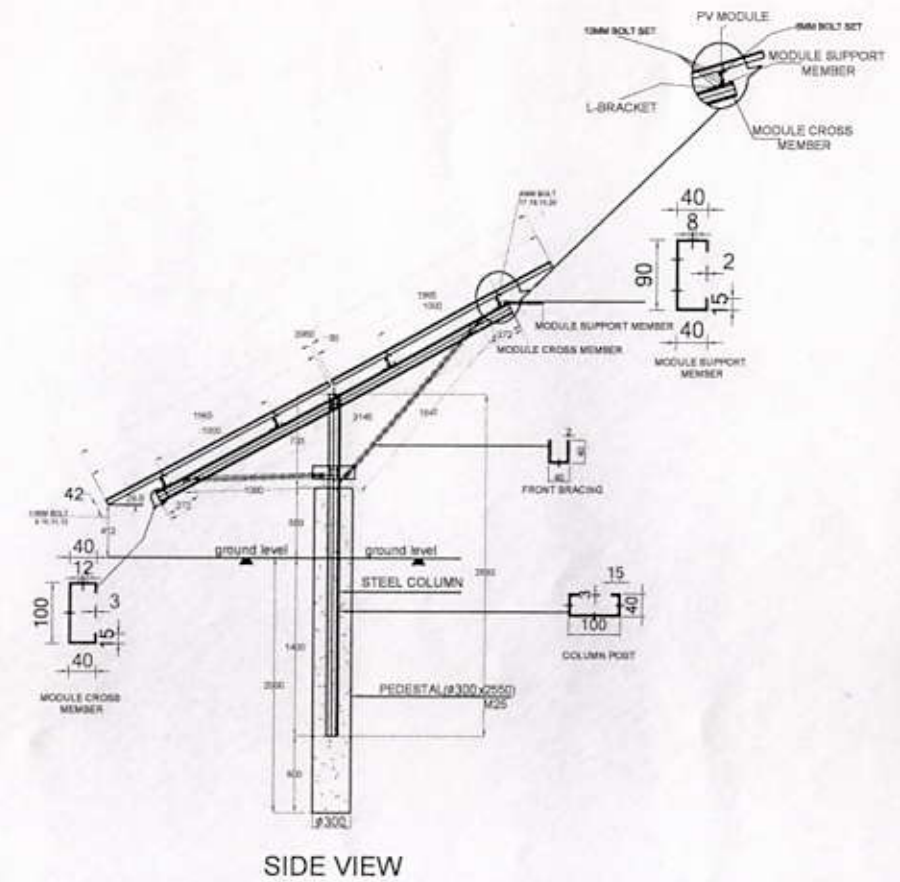
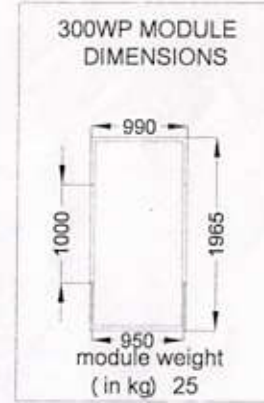
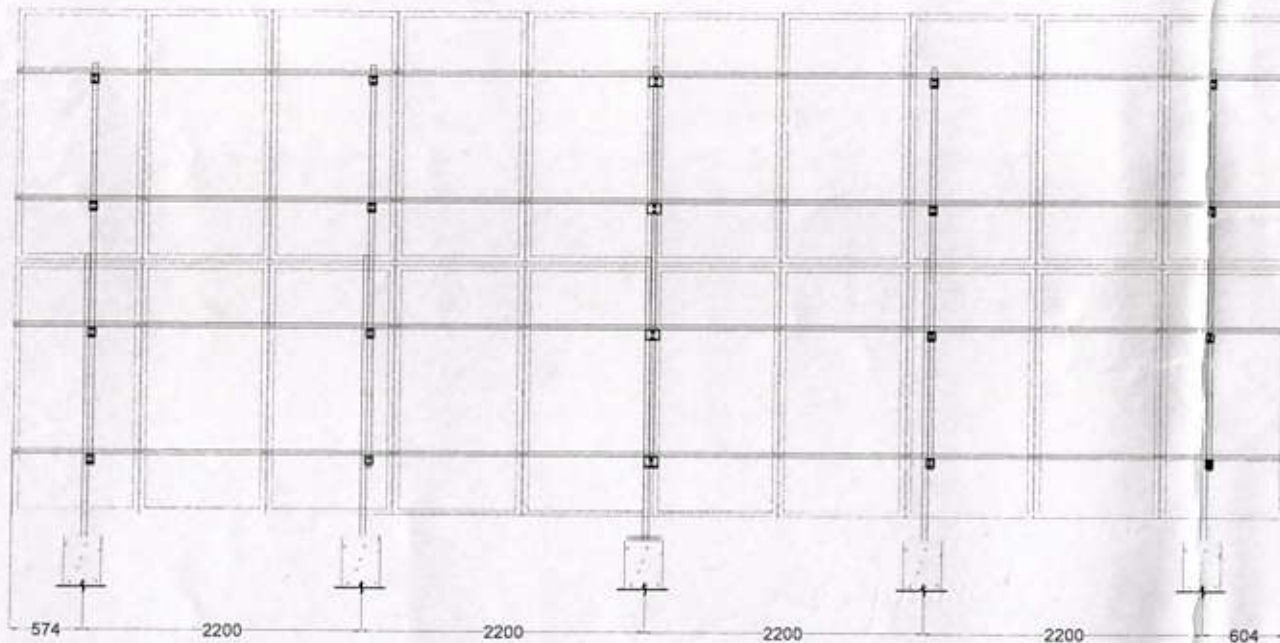
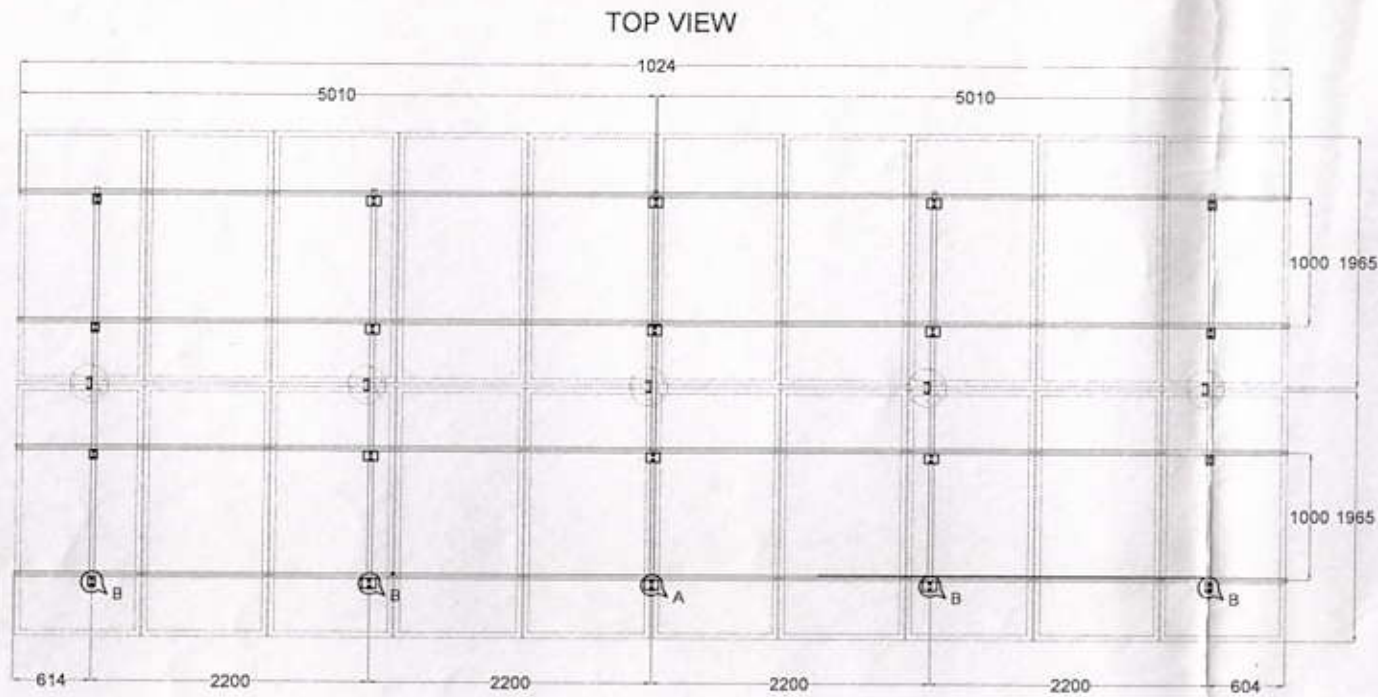
TITLE		CROSS MEMBER & L-BRACKET-A & B FOR 20 MODULES STRUCTURE			
DRG.NO.	F0 10 00 002495	A3	REV	00	Page 4 of 50.



SOLAR PHOTOVOLTAIC GROUP  
 CENTRAL ELECTRONICS LIMITED  
 SAHIBABAD - 201010 (U.P.)



# 20 MODULES STRUCTURE



MATERIAL DETAILS						
PART NO	DESCRIPTION	DWG.NO	SIZE	TAPE GRADE	ST QTY.NO	LOCATION
1	LEG MEMBER		380X100X4X100	E 300	8 NOS	TO JOIN THE PEDESTAL
2	CLUBBET PLATE		300X100	E 300	8 NOS	TO JOIN THE LEG MEMBER
3	MODULE SUPPORT MEMBER		5010X40X100	E 300	8 NOS	TO JOIN THE PURLIN
4	MODULE CROSS MEMBER		3165X100X4X100	E 300	8 NOS	TO JOIN THE CROSS MEMBER
5	L BRACKET - A		120X100	E 300	4 NOS	TO JOIN BETWEEN THE CROSS MEMBER ALSO PURLIN
6	L BRACKET - B		100X100	E 300	16 NOS	
7	FRONT BRACING		160X40X40	E 300	8 NOS	TO JOIN BETWEEN THE CROSS MEMBER ALSO LEG MEMBER
8	BEAR BRACING		100X100X40	E 300	4 NOS	

HARDWARES DETAILS						
PART NO	DESCRIPTION	SIZE	QTY	LOCATION		
9	HEX HEAD SCREW	M10X30	168 NOS	TO JOIN BETWEEN THE CROSS MEMBER ALSO PURLIN & LEG MEMBER & ALL		
10	HEX HEAD NUT	M10	168 NOS			
11	FLAT WASHER	M10	306 NOS			
12	SPRING WASHER	M10	168 NOS			
13	HEX HEAD SCREW	M6X25	82 NOS	TO JOIN BETWEEN THE PURLIN AND SOLAR PANEL		
14	HEX HEAD NUT	M6	82 NOS			
15	FLAT WASHER	M6	164 NOS			
16	SPRING WASHER	M6	82 NOS			

checked & verified *Abhilash*  
**ABHILASH RAJWANSHI**  
 CHARTERED ENGINEER & approved 18/09/2017  
 MECHANICAL  
 MEMBERSHIP NO-AM150761-6

ALL DIMENSIONS ARE IN MM

"THIS DOCUMENT IS THE PROPERTY OF CENTRAL ELECTRONICS LIMITED. REPRODUCTION, UTILISATION OR DISCLOSURE TO THIRD PARTIES IN ANY FORM WHATSOEVER IS NOT ALLOWED WITHOUT WRITTEN CONSENT OF THE PROPRIETORS"

DESIGNED	<i>Ganjev</i>	23/09/17	MATL .	DIM IN MM	NO.OFF
DRAWN	<i>Bingh</i>	23/09/17	FINISH	SCALE	NTS
CHECKED	<i>Verind</i>	23/09/17		PROJECT	CEERI(pilani)
APPROVED				RAJASTHAN	

SOLAR PHOTOVOLTAIC GROUP CENTRAL ELECTRONICS LIMITED SAHIBABAD - 201010 (U.P.)	TITLE		DRG.NO.		A3
	ASSEMBLY DRAWING FOR 20 MODULES STRUCTURE		A0 10 00 002493		
			REV.NO.		SHEET NO.
			00		00